

# WEEKLY SALES NOTES

June 13, 2026



## INDIA INDEX MOVEMENT

Name	Closing	1-day	7-day	1-month	3-month	6-month	1 year	3yr CAGR	5yr CAGR	10yr CAGR
Nifty 50	23,623	1.99	1.10	0.90	2.04	9.31	6.94	8.07	8.38	11.29
Nifty 500	22,600	2.19	0.60	0.99	5.65	4.75	4.04	12.09	10.75	12.77
Nifty Bank	56,815	2.97	4.25	6.28	5.69	4.34	1.62	8.83	10.14	12.39
Nifty PSU Bank	8,529	2.71	3.27	5.76	0.14	3.41	18.33	28.04	28.08	12.80
NIFTY Private Bank	27,650	2.84	5.13	6.94	8.39	4.00	3.22	7.02	8.44	10.63
Nifty Auto	26,294	1.95	0.49	1.56	8.67	5.49	10.16	21.50	19.55	11.81
Nifty Financial Services	25,943	3.15	3.54	3.29	3.20	6.25	5.37	10.04	9.29	13.78
Nifty FMCG	48,828	0.63	1.09	3.51	1.89	10.39	11.95	1.74	6.49	8.95
Nifty IT	27,796	0.09	4.19	0.43	4.39	27.38	27.66	1.29	0.30	9.55
Nifty Metal	12,855	0.95	2.78	3.28	13.83	22.00	36.21	28.01	18.91	19.85
Nifty Pharma	24,380	0.30	0.54	2.03	6.78	6.89	10.30	23.34	11.01	8.50
Nifty Realty	770	3.53	0.09	0.70	8.42	13.19	26.14	13.91	16.55	15.29
Nifty Energy	39,244	1.52	2.73	1.44	8.80	12.00	7.62	17.17	13.54	16.55
MSCI INDIA VALUE	1,901	1.95	0.17	0.72	0.75	11.04	9.11	9.44	8.08	11.74
MSCI INDIA GROWTH	2,811	2.30	0.95	1.87	8.26	1.45	0.05	12.42	10.41	10.63
Nifty Next 50	70,007	2.38	0.26	1.22	8.22	2.19	1.25	17.39	12.24	13.53
NIFTY Midcap 100	60,768	2.43	0.02	1.00	10.97	0.80	1.51	20.47	17.33	16.41
NIFTY Smallcap 100	18,197	2.80	0.48	1.13	14.48	4.64	4.13	19.71	13.29	12.81

# WEEKLY SALES NOTES

June 13, 2026



## GLOBAL INDEX MOVEMENT

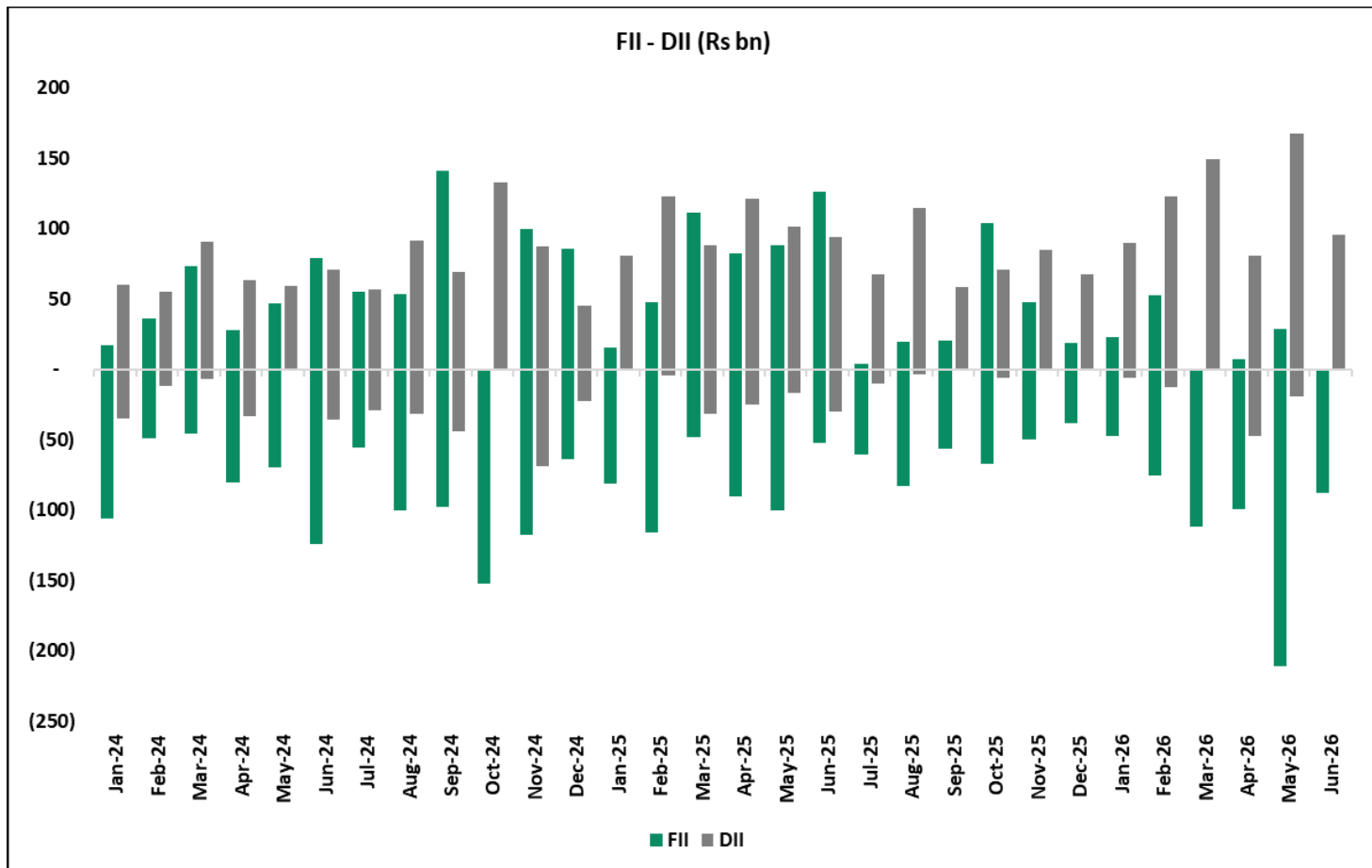
Name	Closing	1-day	7-day	1-month	3-month	6-month	1 yr	3yr CAGR	5yr CAGR	10yr CAGR
DOW JONES INDUS. AVG	51,202	0.70	0.66	3.04	9.97	5.66	18.34	14.39	8.23	11.22
S&P 500 INDEX	7,431	0.50	0.65	0.17	12.05	8.85	22.32	19.37	11.84	13.61
NASDAQ COMPOSITE	25,889	0.31	0.70	1.94	17.12	11.61	31.26	24.02	12.97	18.25
S&P/TSX COMPOSITE INDEX	34,938	0.77	1.52	2.63	7.36	10.82	30.27	20.46	11.65	9.67
S&P/BMV IPC	67,955	1.46	2.74	3.18	3.51	5.01	15.82	7.58	5.79	4.31
BRAZIL IBOVESPA INDEX	1,71,133	0.21	1.25	3.37	3.67	6.45	24.45	13.60	5.74	13.40
Euro Stoxx 50 Pr	6,188	2.16	2.07	5.57	8.24	8.16	12.99	12.48	8.44	8.26
FTSE 100 INDEX	10,472	1.63	1.00	1.42	2.05	8.53	15.97	11.30	7.98	5.86
CAC 40 INDEX	8,351	1.83	1.61	4.28	5.55	3.50	5.61	4.63	4.82	7.29
DAX INDEX	24,635	1.76	0.50	2.07	5.07	1.86	1.84	14.92	9.44	9.98
IBEX 35 INDEX	18,764	2.59	2.29	6.28	10.00	11.33	29.82	26.21	15.31	8.73
FTSE MIB INDEX	51,497	1.97	3.22	4.08	16.20	18.35	26.42	23.16	14.90	12.21
OMX STOCKHOLM 30 INDEX	3,114	1.60	0.09	2.15	3.14	10.37	23.49	10.29	6.44	9.35
SWISS MARKET INDEX	13,708	1.32	2.39	3.75	6.77	6.37	9.79	6.57	2.97	6.02
NIKKEI 225	66,020	2.81	0.85	4.34	22.67	29.87	68.23	25.98	17.93	15.33
HANG SENG INDEX	24,718	1.93	0.98	6.33	2.94	4.85	0.89	8.19	3.04	1.94
CSI 300 INDEX	4,777	1.16	0.82	4.42	2.32	4.29	21.33	7.32	1.77	4.50
S&P/ASX 200 INDEX	8,804	1.98	2.07	2.01	2.17	1.23	0.80	7.24	3.78	5.40
BBG World Lrg/Mid Cap PR	2,578	1.15	0.64	0.30	11.28	10.02	21.93	17.78	8.81	10.85
MSCI WORLD VALUE INDEX	4,768	1.04	1.09	0.99	8.28	10.03	19.33	14.81	7.63	7.72
MSCI WORLD GROWTH INDEX	7,393	0.76	0.28	0.49	13.24	7.25	20.87	20.54	11.29	14.61

# WEEKLY SALES NOTES

June 13, 2026



## FII-DII

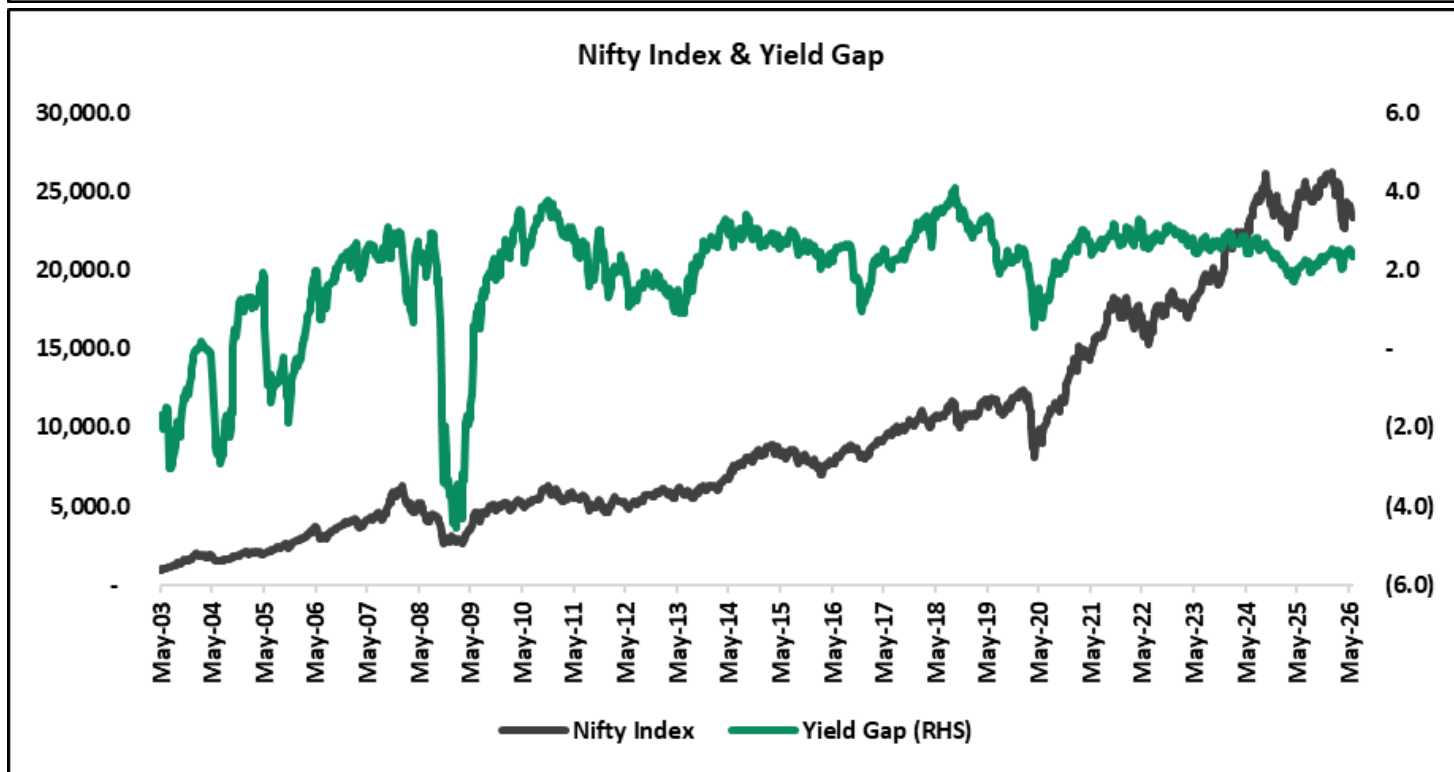
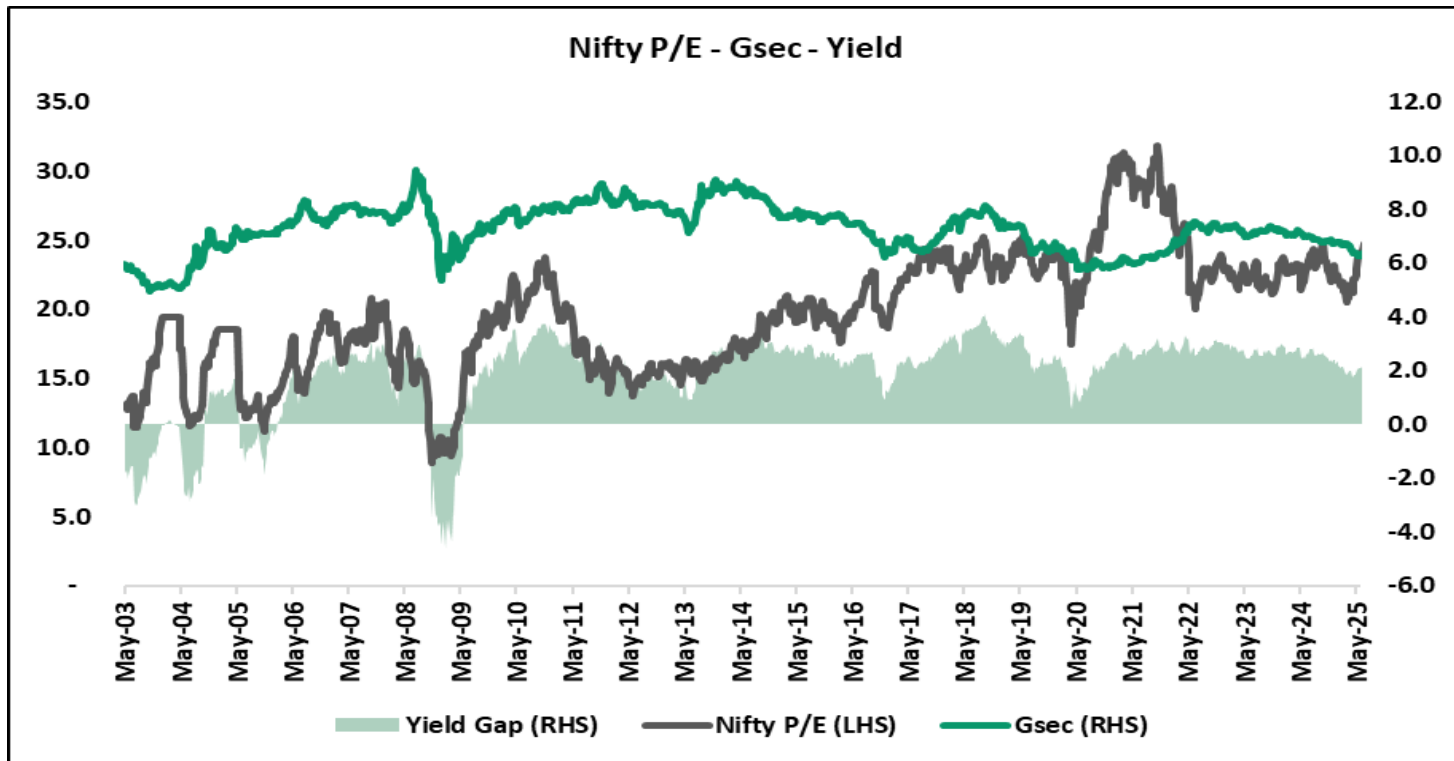


# WEEKLY SALES NOTES

June 13, 2026



## INDIA - EQUITY RISK PREMIUM / GSEC



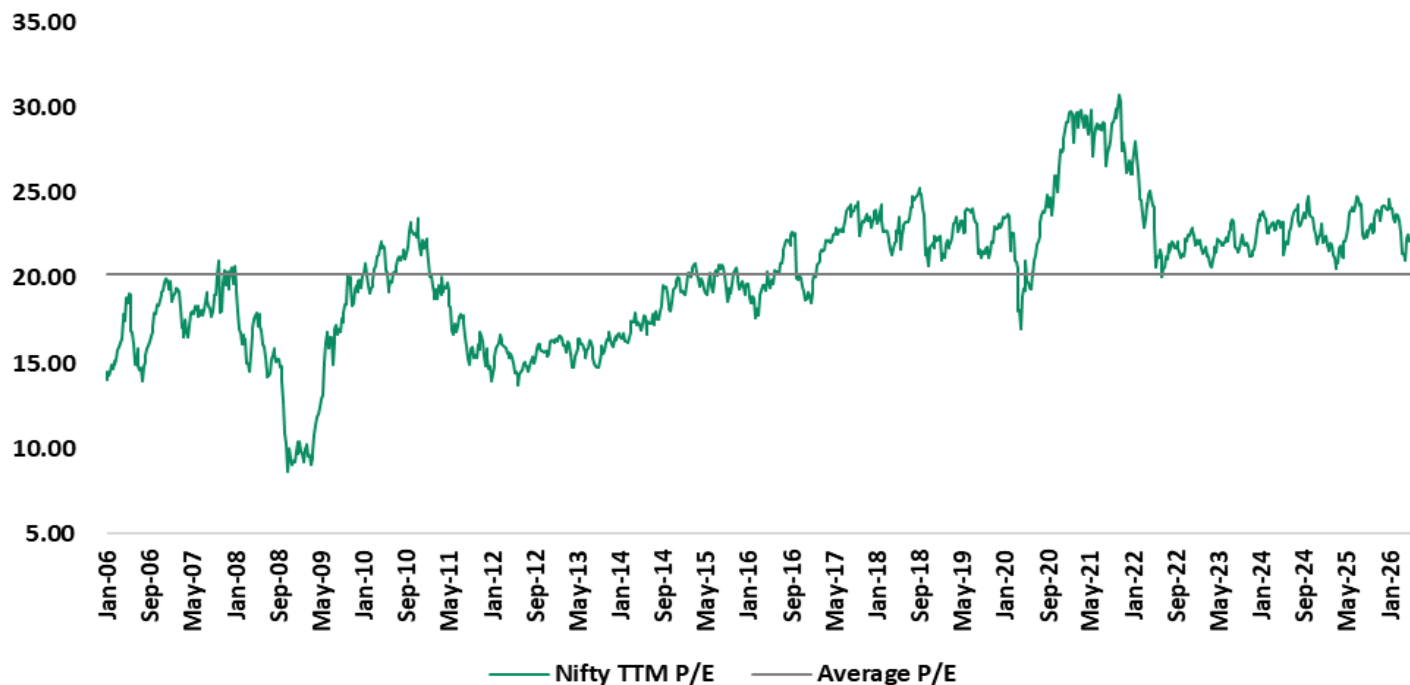
# WEEKLY SALES NOTES

June 13, 2026



## NIFTY TTM P/E & P/B

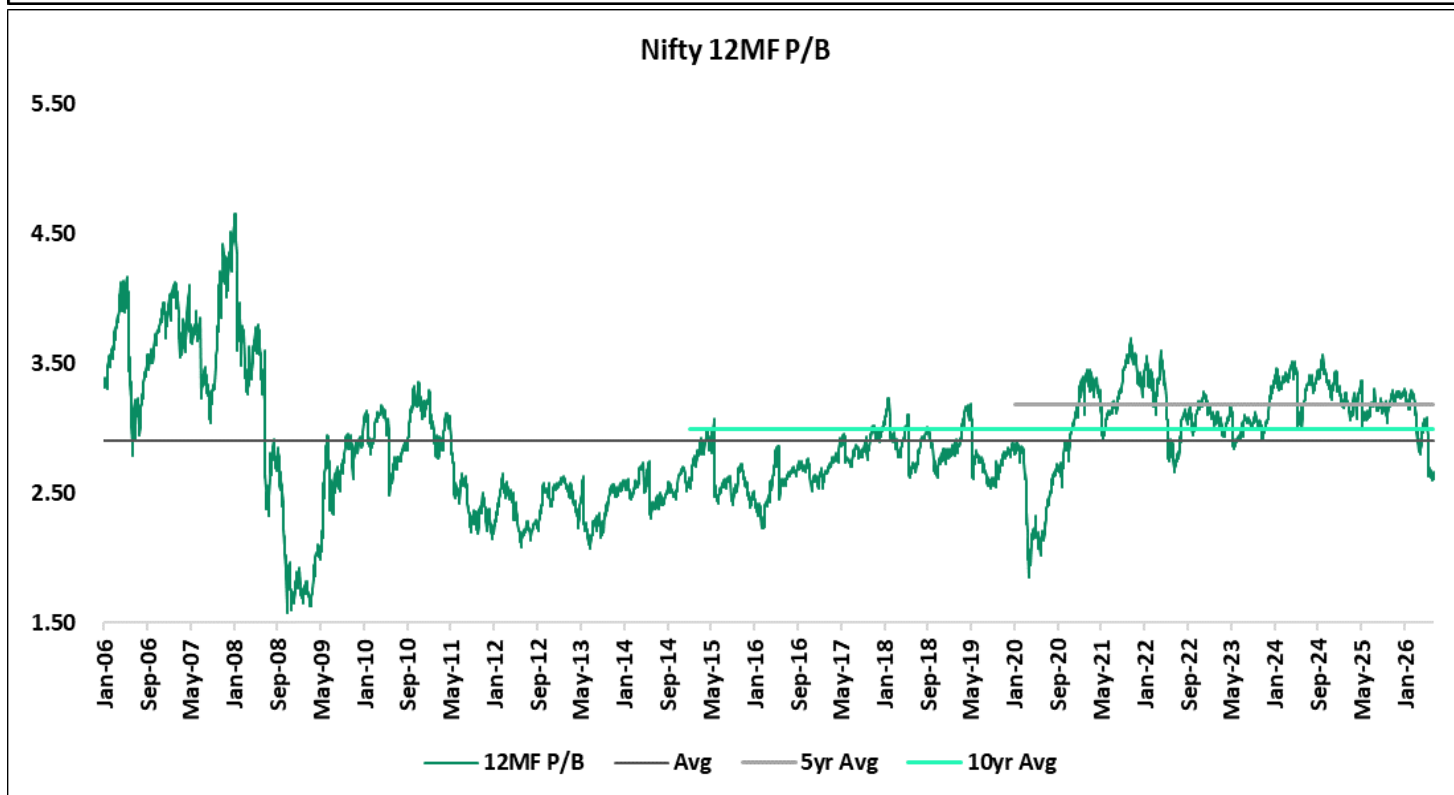
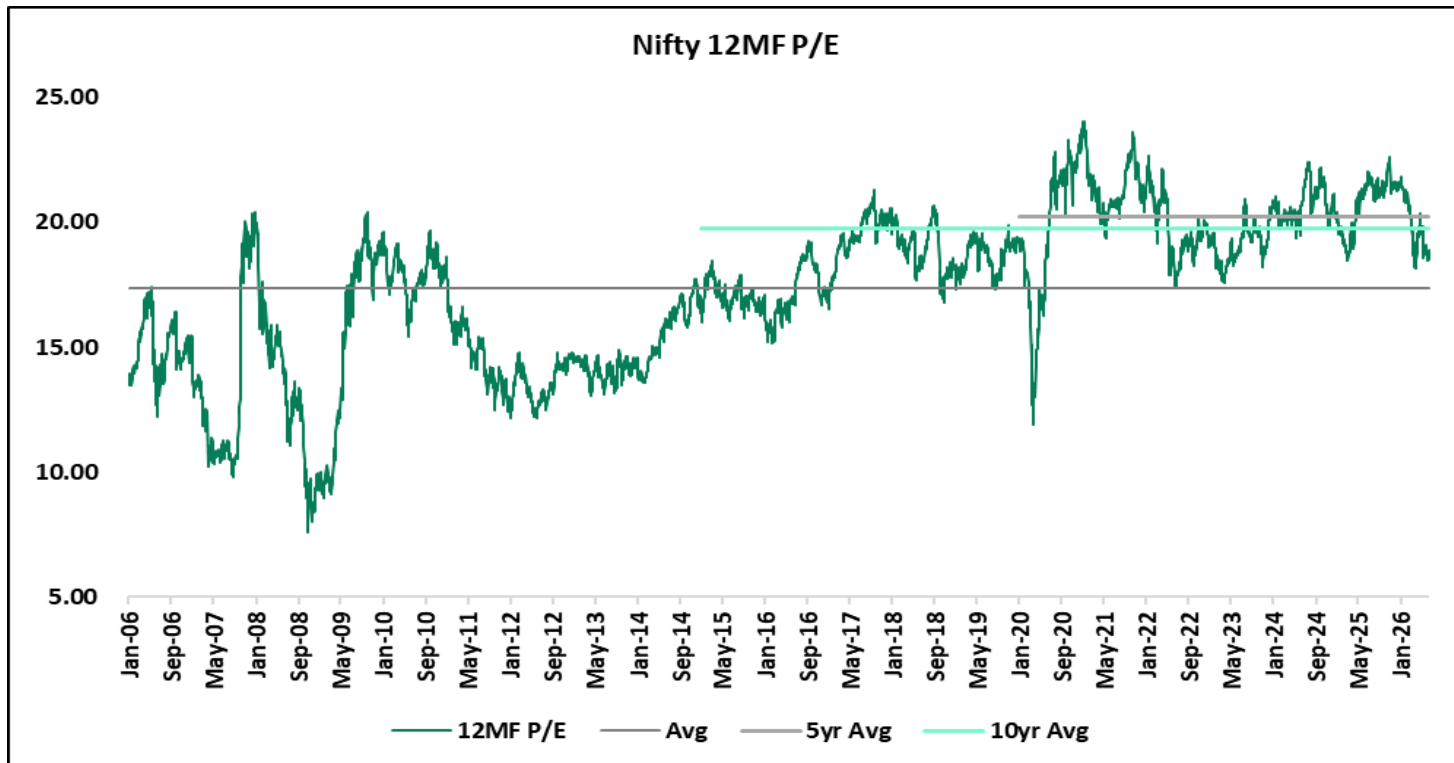
### NIFTY TTM P/E



### NIFTY TTM P/B



## NIFTY 12M FORWARD P/E & P/B

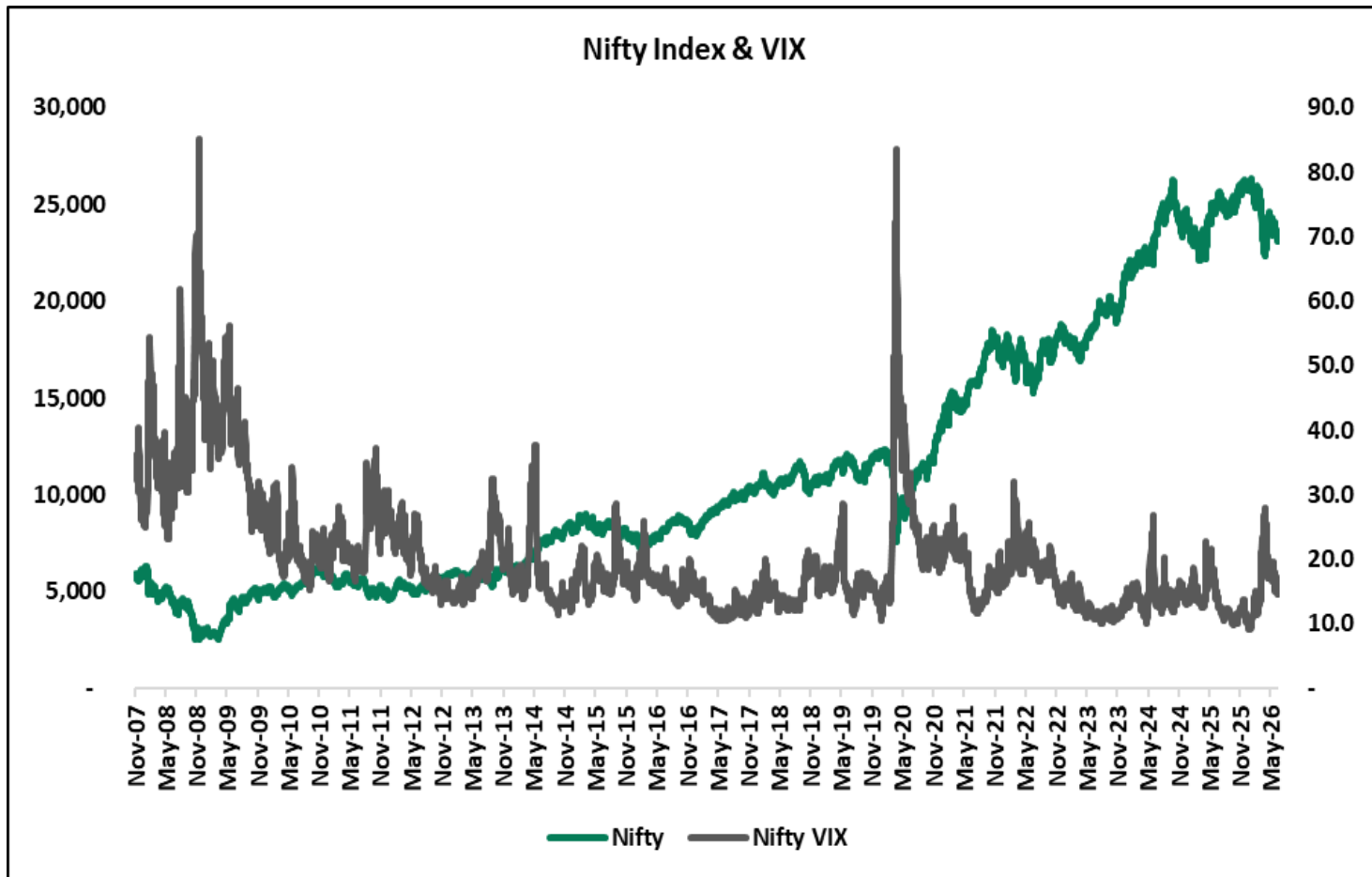


# WEEKLY SALES NOTES

June 13, 2026



## NIFTY - VIX



# WEEKLY SALES NOTES

June 13, 2026



## US - EQUITY RISK PREMIUM / GSEC



# WEEKLY SALES NOTES

June 13, 2026



## INTERNATIONAL BONDS

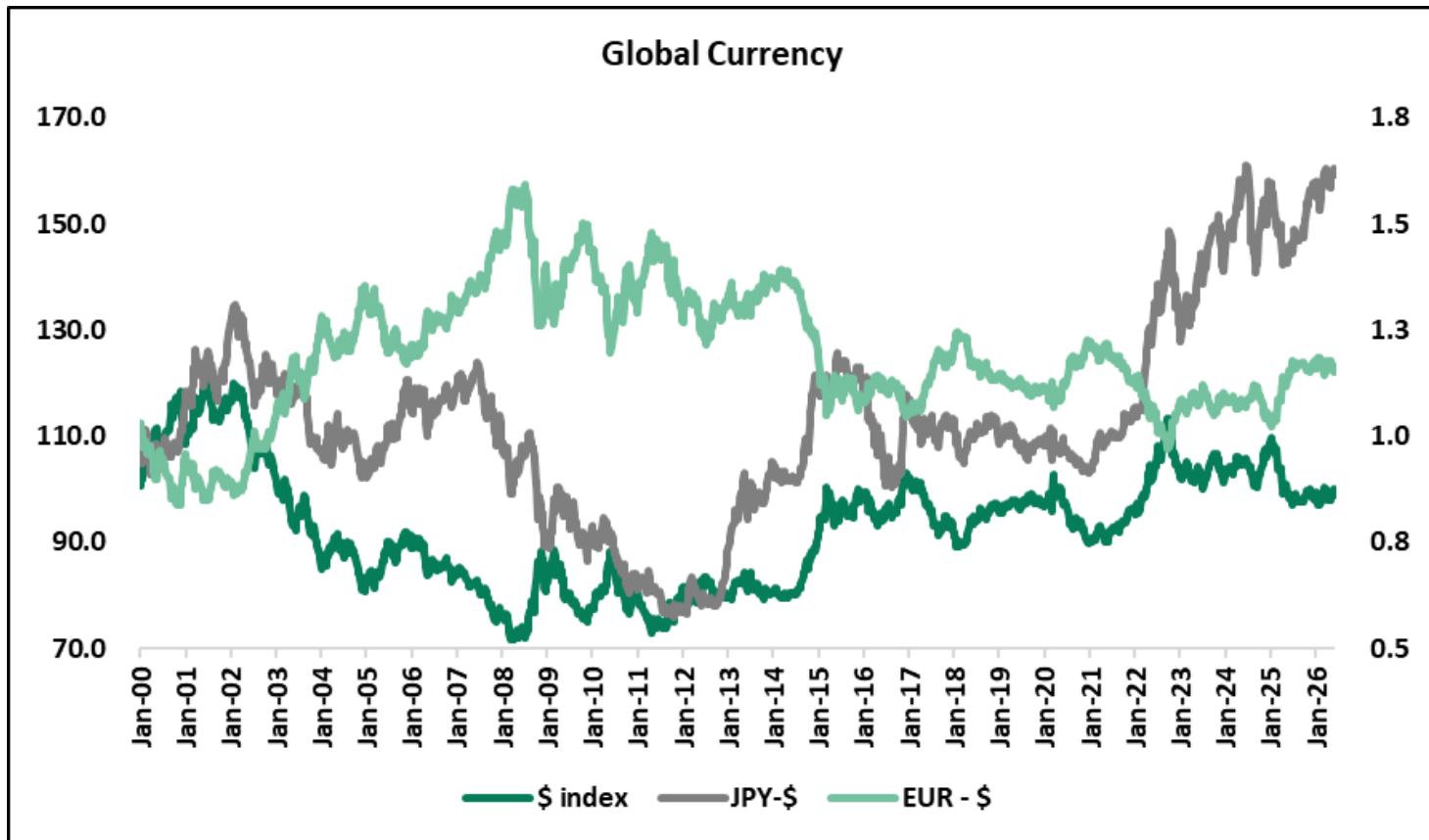
Name	Closing	1-day	7-day	1-month	3-month	6-month	1 Year	3 Year	5 Year	10 Year
India 10 Yr	6.89	6.92	6.98	7.05	6.68	6.59	6.34	7.00	6.01	7.52
India 30 Yr	7.54	7.57	7.59	7.61	7.47	7.34	7.00	7.22	6.88	NA
US 10 Yr	4.48	4.46	4.53	4.47	4.28	4.18	4.36	3.81	1.45	1.61
US 30 Yr	4.97	4.96	5.00	5.03	4.90	4.84	4.84	3.92	2.14	2.42
UK 10 Yr	4.84	4.91	4.90	5.07	4.82	4.52	4.48	4.43	0.71	1.14
UK 30 Yr	5.54	5.59	5.59	5.74	5.50	5.27	5.19	4.62	1.25	1.98
German 10 Yr	3.00	3.03	3.04	3.10	2.98	2.86	2.48	2.42	0.27	0.00
German 30 Yr	3.55	3.56	3.57	3.63	3.53	3.48	2.93	2.56	0.29	0.55
Japan 10 Yr	2.63	2.69	2.67	2.59	2.26	1.95	1.45	0.43	0.04	0.16
Japan 30 Yr	3.81	3.88	3.90	3.84	3.53	3.36	2.92	1.25	0.66	0.24
France 10 Yr	3.75	3.80	3.69	3.73	3.67	3.58	3.18	2.94	0.10	0.42
France 30 Yr	4.53	4.56	4.55	4.58	4.49	4.46	3.92	3.34	0.91	1.22
China 10 Yr	1.74	1.75	1.72	1.75	1.83	1.84	1.70	2.63	3.15	2.96
China 30 Yr	2.23	2.24	2.21	2.24	2.37	2.25	1.85	3.02	3.66	NA

# WEEKLY SALES NOTES

June 13, 2026



## DOLLAR INDEX & KEY CURRENCIES



# WEEKLY SALES NOTES

June 13, 2026



## CRYPTO PRICE MOVEMENT

Name	Closing	1-day	7-day	1-month	3-month	6-month	1 yr	3yr CAGR	5yr CAGR	10yr CAGR
Bitcoin / USD	63,418.5	0.12	2.91	20.40	10.46	28.31	40.25	34.87	10.07	57.17
Bloomberg Bitcoin Index	79,490.8	0.02	5.65	20.06	10.65	29.51	40.57	34.94	11.33	57.21
Ethereum / USD	1,664.02	0.41	3.79	26.46	20.25	46.01	36.73	1.44	8.01	NA
ETHEREUM Index	1,763.66	0.95	6.05	26.15	20.80	45.94	37.81	1.45	6.90	NA
FAANG Index	1,573.63	1.47	0.12	2.90	2.50	9.80	28.73	12.16	8.07	12.49

# WEEKLY SALES NOTES

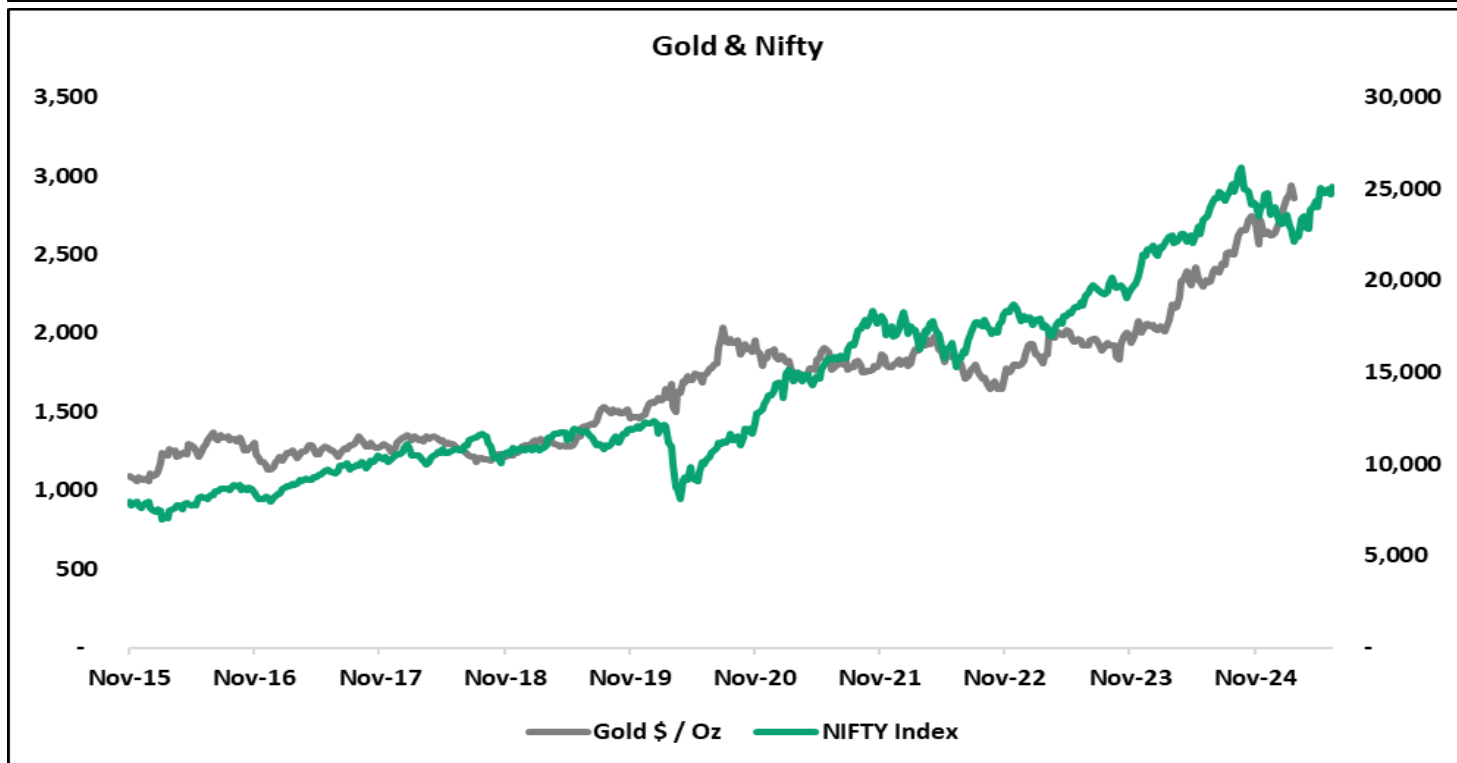
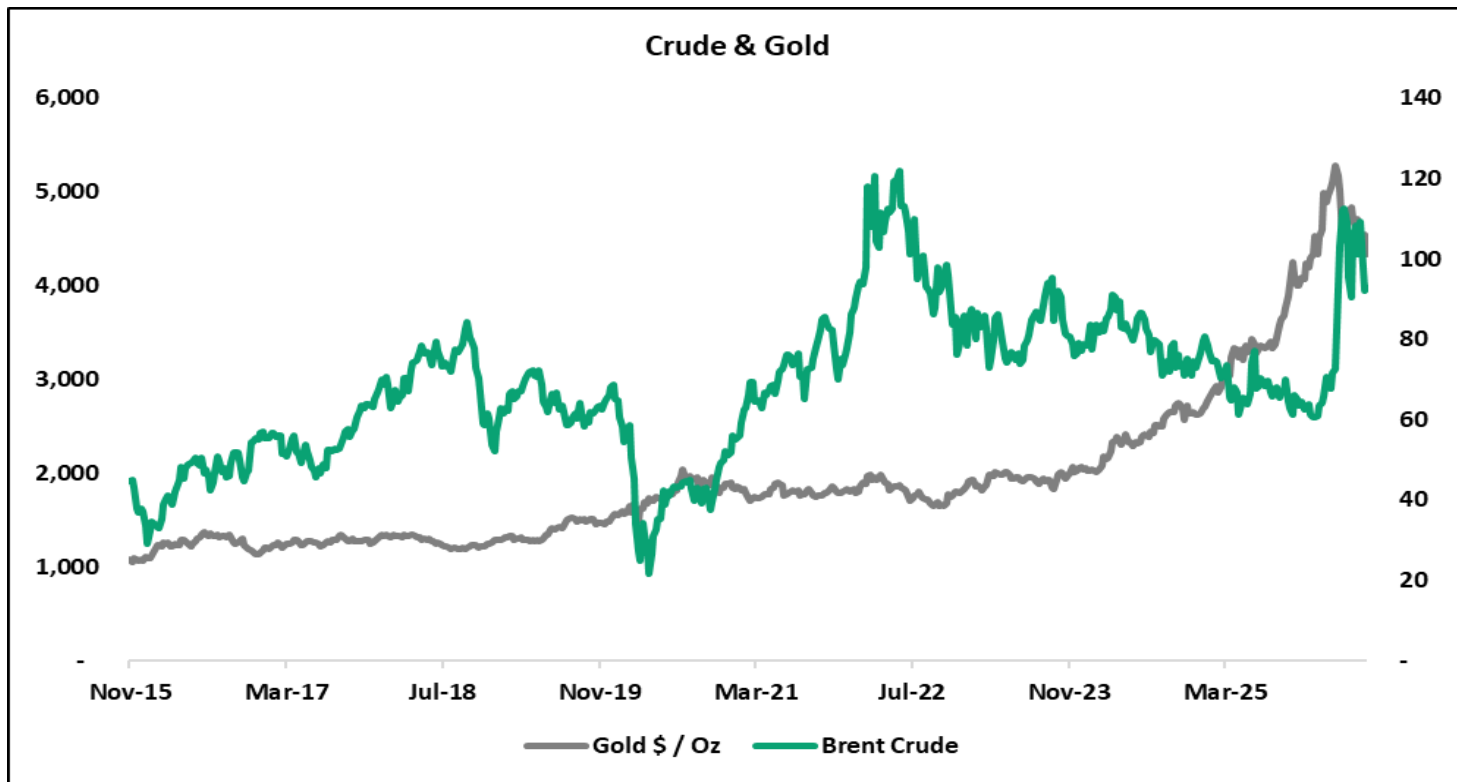
June 13, 2026



## KEY GLOBAL COMMODITIES PRICE

Name	Closing	1-day	7-day	1-month	3-month	6-month	1 Yr	3 Yr CAGR	5 Yr CAGR	10 Yr CAGR
<b>ENERGY</b>										
WTI Crude (USD / bbl)	84.88	3.23	6.25	15.98	14.01	47.77	24.75	6.93	3.66	5.76
Brent Crude (USD / bbl)	87.33	3.37	6.19	17.32	15.33	42.88	25.91	5.54	3.74	5.77
Natural Gas (USD/Mmbtu)	3.12	1.07	3.38	8.94	0.35	24.14	10.65	10.06	1.09	1.82
<b>INDUSTRIAL METAL</b>										
Aluminum (USD / MT)	3,533.01	0.72	2.61	5.26	1.80	24.71	40.14	17.11	7.46	8.21
Copper (USD / MT)	13,698.00	1.60	1.32	3.21	7.18	18.96	41.19	17.43	6.49	11.75
Nickel (USD / MT)	17,617.37	0.80	4.15	7.26	3.27	22.32	17.81	6.97	0.65	7.12
Zinc (USD / MT)	3,571.74	2.65	1.72	1.75	9.76	11.09	36.66	14.43	3.36	5.90
Tin (USD / MT)	53,388.00	1.70	1.50	4.63	13.57	29.11	63.95	26.27	10.17	12.12
Lead (USD / MT)	1,959.05	1.11	1.43	2.84	5.29	2.10	0.57	2.49	2.20	1.55
Iron Ore (CNY / MT)	797.50	2.90	2.90	4.61	2.33	1.08	5.70	1.85	9.86	5.06
Steel Bar (CNY / MT)	3,075.00	0.00	0.29	2.38	2.54	3.47	5.56	4.65	8.90	4.40
<b>Precious Metal</b>										
Gold Spot \$/Oz	4,219.33	0.17	2.52	10.01	15.94	1.87	24.61	29.48	17.58	12.62
Silver Spot \$/Oz	68.02	1.06	0.28	22.31	15.60	9.78	87.17	42.18	19.50	14.61
Platinum Spot \$/Oz	1,720.74	0.03	3.35	19.65	15.16	1.51	32.51	20.60	8.38	5.84
Palladium Spot \$/Oz	1,285.47	1.00	4.85	14.45	17.27	13.93	20.77	1.87	14.28	9.18
<b>CROSS PRECIOUS METAL</b>										
Gold / Silver	62.03	0.85	2.76	15.77	0.43	10.61	33.43	8.93	1.60	1.74
Gold / Eur	3,647.46	0.24	2.94	8.89	17.04	0.40	24.80	26.52	18.66	12.26
Gold / Platinum	2.45	0.20	0.86	11.98	0.92	0.36	5.97	7.37	8.49	6.40
Gold / Palladium	3.28	0.81	7.03	5.18	1.61	14.03	3.19	31.95	37.17	3.15
Palladium / Platinum	0.75	1.05	8.49	6.50	2.53	12.60	8.87	18.62	20.90	3.16
<b>AGRI</b>										
Arabica Coffee (USD / Lb)	257.20	1.28	4.34	13.18	11.42	35.25	26.05	12.07	10.31	6.65
Corn (Usd / bu)	412.75	0.24	1.14	11.52	8.78	4.35	5.87	12.33	9.62	0.56
Cotton (USD / Lb)	72.94	0.62	1.10	15.98	10.77	14.27	11.97	4.11	3.46	1.47
Rice (USD / cwt)	12.04	1.35	2.86	2.51	9.11	22.11	12.34	13.29	1.29	0.64
Sugar (USD / Lb)	13.70	0.65	3.11	10.92	4.66	9.27	15.80	18.34	4.82	3.39
Wheat (USD / bu)	584.50	0.38	0.78	12.11	5.50	9.35	11.02	2.79	3.00	1.88

## KEY COMMODITIES



## News Link

### Auto / Auto Ancillaries

[Tata Motors CV bets on exports, clean mobility for FY27 growth](#)

[Vehicle retail sales jump 10% in May to 2.53 million units on rural demand](#)

[BMW Group India to hike prices by up to 2 pc across BMW, MINI vehicle portfolios from July 11](#)

[Indian retail auto sales rise 9.6% in May; dealers see monsoon-driven demand ahead](#)

[Maruti Suzuki announces price protection for small cars booked till June 14](#)

[Mahindra's SUV output dips up to 15% in June amid supply chain worker crunch; XUV 7XO, Thar production hit](#)

[Hyundai's Chennai plant resumes operations after fire, targets full recovery by June 22](#)

[Bajaj auto foundation commits ₹400 crore for women in engineering, unveils ₹1,500-crore skilling plan](#)

[PM Modi-led govt's 12 years in power are 'transformational for industry': Maruti Suzuki chairman](#)

[Revenue of auto ancillary firms grew at 11% CAGR during 2016-26: Report](#)

[Mahindra's SUV output dips up to 15% in June amid supply chain worker crunch; XUV 7XO, Thar production hit](#)

### Banking / Finance

[Banks to be told to step up FCNR \(B\) deposits](#)

[ATMs in small hubs may run out of cash: Confederation of ATM Industry](#)

[Citi leverages AI to transform payments, boost efficiency and enhance cross-border transactions](#)

[LIC in talks with regulators on long-term instruments to match growing liabilities: CEO](#)

[Muted returns on market bets steer funds back to banks](#)

[Banks likely to go all out to attract diaspora investment](#)

[RBI opens a dollar swap window to help hedge foreign borrowings](#)

[India banks could raise \\$35-\\$40 billion via RBI's foreign currency deposit scheme, PNB CEO Ashok Chandra says](#)

[State Bank of India hands over Rs 8,813 cr dividend cheque to government for FY26](#)

[Edelweiss Alternatives' Subahoo Chordia quits, likely to launch own fund](#)

[Kiwi targets Rs 5,000 crore premium book with AI-led insurance model](#)

[Bombay HC rejects Lilavati Trust's interim application against HDFC Bank in ₹1,000 crore dispute](#)

[Indian banks better placed than APAC peers: Fitch on West Asia woes](#)

[Life insurers' premium income up 19% in Apr-May](#)

[Canara Bank recovers over half of ₹500 crore Rajesh Exports exposure, CEO outlines growth strategy](#)

[From tax exemption to FCNR\(B\) deposits: How India is trying to attract foreign capital](#)

[HDFC Bank raises MCLR by up to 10 bps across select tenors](#)

[Rajiv Bajaj to step down from Bajaj Finserv board, cites growing responsibilities at Bajaj Auto](#)

[RBI issues draft CCR framework aligned with global standards](#)

[CD rates may fall up to 100 bps as banks tap overseas deposits, loans](#)

[RBI cancels registration certificates of 135 NBFCs](#)

[Pvt sector reposing faith in economy, capex cycle showing signs of revival: Punjab National Bank CMD Ashok Chandra](#)

[India's current account deficit to remain 1.5-1.7% of GDP in FY27 but RBI measures may turn BoP surplus: SBI Report](#)

[BFSI's new trust economy: Why privacy is the quietest driver of growth](#)

[Microfinance market reports a small rise in early stage delinquency](#)  
[The conviction in India continues to be very high: Citi's Achintya Mangla](#)  
[PSBs may lose the edge over private peers as tightening liquidity, rising credit costs may impact growth](#)  
[Bank credit grows 17.4% in May as rising yields push companies to loans](#)  
[Govt eyes rural credit push via flagship schemes, seeks to expand RRB customer base](#)  
[Bank credit grows over 17% in May, extending double-digit rise for 9th month in a row](#)  
[HFCs emerge stronger after FY26 stress, asset quality recovers sharply; sector better placed for FY27: Report](#)  
[Eight public sector banks add 13,223 employees in FY26; SBI leads hiring spree](#)

## Oil & Gas

[Govt hikes domestic LPG prices by Rs 29 per cylinder](#)  
[OPEC+ increases production quotas for July](#)  
[OPEC+ set for fourth oil quota hike since Hormuz closure, sources say](#)  
[Indian households continue to pay among the lowest cooking gas prices in the world: Petroleum Ministry](#)  
[LPG crunch forces IRCTC to resume cooking onboard; 60% of railway food to be prepared on electricity](#)  
[Fitch sees global oil markets returning to oversupply after Hormuz reopens](#)  
[Kumar Shanker takes charge as IGL MD](#)  
[Cairn, Vedanta Oil & Gas raises output from Hazarigaon gas field in Assam](#)  
[Bharat Petroleum to shut crude unit at Mumbai refinery in November](#)  
[Iran war fallout: Fuel use drops 6.5% in May; experts see warning signs for economy](#)  
[Companies seek lifting of curbs on gas pipeline integration](#)  
[BP names heads for two main businesses after revamp](#)  
[ATF prices rise about 10% as oil companies roll out fixed pricing](#)  
[India's May fuel consumption up 2.4%; LPG demand drops 20% amid Hormuz disruptions](#)  
[India waives excise duty on petrol with higher ethanol](#)  
[Brazil ready to ramp up crude supplies to India as Iran war disrupts gulf flows](#)  
[India, UAE move to expand strategic crude reserves; Abu Dhabi-linked oil storage may rise to 30 mln barrels](#)  
[US-Iran war: Oil seen averaging at \\$105 per barrel in June, July as Brent remains below \\$100 a barrel](#)  
[Nagaland seeks restart of petroleum exploration as Rio discusses plans with Hardeep Puri](#)  
[Govt bars bulk industrial petrol, diesel purchases through petrol pumps](#)  
[US 'specifically' asked India to buy Russian oil in 2022, says EAM Jaishankar](#)  
[India restricts sale of high speed diesel and motor spirit from retail outlets](#)  
[Blending of E20+ and petrol exempt from excise duty](#)  
[OPEC again lowers 2026 global oil demand growth forecast](#)

## Metals/Mining/Power/Goods

[300 engineers get promotion in landmark move by Tamil Nadu Power Distribution Corporation](#)  
[Sops for private investors in nuclear energy on cards](#)  
[Hindalco expects aluminium to shine bright downstream](#)  
[Tata Steel says UK plant's low-emission project facing delays in securing electricity access](#)  
[Ficci proposes 700MW PHWR tech transfer framework to boost nuclear energy investment](#)  
[Solar module cos flag cell shortage; makers say demand can be met this year](#)  
[India's EV penetration crosses 11% for first time as auto retail sales hit record in May](#)

# WEEKLY SALES NOTES

June 13, 2026



[GPS Renewables raises Rs 635 crore in Series C funding](#)

[DEE Development Engineers Ltd bags Rs 387 crore contract from Bharat Petroleum](#)

[Centre has coal reserves for 80 days of power generation: Union Minister Kishan Reddy](#)

[Adani Energy to buy IntelliSmart for ₹3,050 crore](#)

[850 acres of vacant defence land in Uttar Pradesh to host 250 MW solar power plant](#)

[Adani Energy Solutions to acquire IntelliSmart for Rs 3,050 crore, to become India's largest smart metering platform](#)

[Electric passenger vehicle retail sales jump 81.2% to 26,682 units in May: FADA](#)

[Solar module cos flag cell shortage; makers say demand can be met this year](#)

[Coal exchange rules issued, focus on price discovery and quality](#)

[Jindal Poly Films dispute, India's first class action suit, sent by Supreme Court to arbitration](#)

[L&T betting big on 'digital workers' to overcome manpower challenges in projects: CFO R Shankar Raman](#)

[Vedanta readies \\$5.2 billion refinancing after rating upgrades](#)

[JSW Steel crude steel production rises 15% to 22.93 LT](#)

[Power finance cos turn to global markets for cheaper funds](#)

[President approves merger of REC with Power Finance Corporation](#)

[Japan's Chubu Electric set to buy \\$150 million stake in Continuum Green](#)

[Electric two-wheelers, private EV cars record highest registrations since 2019 in Delhi](#)

[Consumers who gave up subsidy can use Non-DCR equipment to install rooftop solar at homes](#)

[Juniper Green Energy commissions 305 MWp of renewable capacity in Gujarat](#)

[Reliance, Meta announce Jamnagar data centre; CleanMax to supply over 900 MW renewable energy capacity](#)

[L&T betting big on 'digital workers' to overcome manpower challenges in projects: CFO R Shankar Raman](#)

[Hindustan Zinc signs pact with Sulfozyme Agro to advance sustainable metal recovery](#)

[EV push to absorb over Rs 24,000 cr of automakers' capex in two years as electric car adoption accelerates: Crisil](#)

[Fueling Demand: Inside India's ethanol mobility revolution in reverse](#)

[Japan's Chubu Electric set to buy \\$150 million stake in Continuum Green](#)

[Cement demand growth likely to moderate to around 5% in FY27: Ambuja Cements](#)

[Reliance, Vedanta, Adani join India's drive to cut China rare earth dependence, sources say](#)

## FMCG/Retail/Textiles/Agri

[India Inc hikes prices, shrinks packs as Iran war squeezes margins](#)

[India's consumer demand remains resilient despite Iran war, inflation pressures; FMCG firms stay cautiously optimistic](#)

[As cos fast-track AI adoption, data & infra readiness come under spotlight](#)

[Grasim approves Rs 3,000 cr expansion of Harihar Lyocell Plant](#)

[Apple WWDC 2026: Siri gets an AI makeover, its biggest upgrade since 2011 debut](#)

[India's electronics manufacturing boom faces 'scale without depth' hurdle: KPMG](#)

[From gym tubs to kitchen staples: Protein becomes India's new food trend](#)

[Carlyle-backed Viyash Scientific buys Italy's BioForLife for Rs 188 crore](#)

[Haleon to invest Rs 2,000 crore to set up first India plant](#)

[We don't even know where LIC's office is: Rajesh Exports chief amid regulatory heat](#)

[West Bengal polls throw up landslide victory for helmets as sales zoom to record heights](#)

[India's hidden battery fleet can keep the lights on](#)

# WEEKLY SALES NOTES

June 13, 2026



[Chinese production continues despite tech transfer curbs](#)  
[Gen Z's love for cold coffee has brands chasing beverage boom](#)  
[Why Dell thinks students don't need a \\$1,000 laptop anymore](#)  
[Amul to lay foundation stone of Rs 700 crore plant in West Bengal on June 14](#)  
[Apple expands child safety tools as social media bans grow](#)  
[Hands-on with Intel's Arc G3 handheld at Computex: It might finally give AMD some competition](#)  
[Indian online buyers losing up to Rs 28,000 crore annually to dark patterns, hidden charges: Report](#)  
[Customers will feast as Zepto to pour fuel into quick commerce fire](#)  
[Tata Consumer sees margin boost, targets 20%+ EBITDA: Chairman Chandrasekaran](#)  
[Will cooperate fully with fresh forensic audit, won't challenge Sebi interim order: Rajesh Exports](#)  
[Tata Consumer Products to add 50-100 Starbucks outlets annually; sees potential for 8,000 units](#)  
[Government clears 96 firms under latest textile's PLI round with Rs 12,823 crore outlay](#)  
[India counters US Section 301 probe claims of surplus capacity in textiles, steel](#)  
[Retailers' body flags rise in illicit trade, seeks curbs on e-commerce practices](#)  
[Consumer staples sector to face growth normalization in 2nd half of 2026, updates on pricing power and channel efficiency eyed](#)  
[How Gen Z became the most important customer in FMCG](#)  
[Textiles minister Giriraj Singh targets ₹33 lakh crore textile market by FY31](#)  
[Targeting to increase India's textile market size to Rs 33 lakh crore by FY2031: Giriraj Singh](#)  
[Asus to scale up production in India to 20-30 pc, start making gaming laptops in India](#)  
[India-Oman CEPA sparks first duty-free gold jewellery shipment from Kolkata](#)  
[Worst is behind, demand recovery underway for Indian textile sector as tariff woes ease: Report](#)  
[A home that washes, cools and thinks for you: Inside LG's 'Zero Labor Home' vision for India](#)  
[Ecommerce isn't adding much to Retail Inc's cart](#)

## IT/Telecom/Media

[Zee appoints Tejkarran Singh Bajaj as Zee5 India business head](#)  
[Road safety tech plan hit by telcos-auto turf war](#)  
[HC quashes ₹23,600 cr retrospective spectrum dues on Airtel, Voda Idea](#)  
[Bombay HC sets aside govt order on one-time spectrum charges on Airtel, Vodafone Idea](#)  
[Elon Musk's Starlink India launch hits security roadblock ahead of SpaceX IPO](#)  
[Road safety tech plan hit by telcos-auto turf war](#)  
[Airtel to continue its postpaid plan despite backlash over 'slicing'](#)  
[BSNL, IIT Kanpur sign MoU for next-generation telecom technologies](#)  
[Assam emerges as concert hub; Rs 700 crore opportunity seen in 5 years](#)  
[AB Group reaffirms bet on Voda Idea with ₹4,730 Cr infusion](#)  
[Gen Z is bringing audiences back to cinemas, says PVR Inox](#)

## Pharma/Fertilizers/Healthcare/Chemicals

[Uzbekistan can provide more incentives to Indian pharma firms, aims to become regional hub for supply](#)  
[India's anti-obesity drug market sees slower growth after initial surge in generic semaglutide sales](#)  
[India willing to open its market to high-quality, innovative pharma products, says commerce minister](#)  
[Fertiliser Ministry seeks to double subsidy from Rs 1.71 lakh crore budgeted for FY27 as Iran war hits costs](#)

# WEEKLY SALES NOTES

June 13, 2026



[Pharma in her DNA, Wockhardt scion ready for deep dive in the US](#)  
[Duty relief may be extended for petrochemical inputs for pharma](#)  
[Insider trading: Supreme Court upholds SAT clearance to Biocon MD](#)  
[SBI in \\$1 billion funding for Sun Pharma's US deal](#)  
[Indian cancer patients battle shortage of key drugs as platinum costs surge](#)  
[Urea imports may get 50% cheaper before kharif season as China eases supplies](#)  
[Government may lift price cap on cancer drugs making them costlier by up to 50%](#)  
[India's healthcare transformed in 12 years under PM Modi: Report](#)  
[Hetero partners with Richter to develop, market Semaglutide injection globally](#)  
[Regulators tighten GMP oversight of pharma plants](#)  
[India needs to remain attractive for innovation-led investment: Judith Love, Novartis](#)  
[Cancer drug prices raised 50% as NPPA acts on shortage concerns](#)  
[US drug regulator issues import alert for drugs made at a Dabur India plant](#)

## Hospitality/Aviation

[In graphic: How Union Cabinet's Rs 10,000-crore price stabilisation fund for aviation turbine fuel will work](#)  
[Sustainable Aviation Fuel production volumes still disappointing: IATA DG Willie Walsh](#)  
[Indian aviation market offers long-term opportunities: Star Alliance CEO](#)  
[Air India, Thai Airways to enter into codeshare agreement this year, expand travel options for travellers](#)  
[Higher fares can price out people from flying: IATA Chief Economist](#)  
[DGCA to probe damage to 3 parked Air India aircraft at Delhi airport](#)  
[Three Air India aircraft grounded after weather damage, regulator says](#)  
[SpiceJet to induct 3 Airbus A320s on damp lease, ungrounds Boeing 737 MAX](#)  
[Vijay Rupani's daughter accuses Air India of pressuring crash victims' families to waive legal rights](#)  
[Air India opens booking for flights under hub-and-spoke model; services to begin from Varanasi on June 25](#)  
[Emirates to offer incentives, safety assurances as Iran war hits travel](#)  
[Air India's foundations rebuilt, but aircraft delivery delays hurt growth plans: Campbell Wilson](#)  
[Air India Express defers Noida Airport launch, exits Hindon amid cost-cutting](#)  
[Air India crash report delayed due to unfinished engine examination](#)  
[Subject expert exits Air India Ahmedabad crash probe over differences](#)  
[CSIR-NAL ties up production partner for HANSA-3 trainer aircraft; SARAS Mk-2 still in design phase](#)  
[Air India denies pressuring AI-171 victims' families to sign compensation waiver, says no deadline to accept settlement](#)  
[AI 171 crash: 'Wish we could save more lives', rues first responder](#)  
[India among Marriott's fastest-growing markets; footprint to double in 5 years](#)  
[China company secures Kenya airport deal after Adani fallout](#)  
[AI-171 crash: Pilots' body renews judicial probe demand, opposes interim report release](#)  
[Raipur-bound IndiGo flight carrying Chhattisgarh leaders diverted to Nagpur due to bad weather](#)  
[Noida airport to rely on cabs as flights begin on June 15](#)  
[GHAL remits Rs 12.28 crore interim dividend to Telangana Government](#)  
[Akasa Air launches 'SkyCadet' programme to train next generation of pilots](#)  
[Air India says 96% of Ahmedabad crash victims' families have received interim compensation](#)

# WEEKLY SALES NOTES

June 13, 2026



## SMIFS VALUATION MATRIX

Company Name	Sector	CMP as on 12-01-26	MCap (In Cr.)	Map In USD	Last report Target Price	Last Report Recommendation	Updated Target Price	Upside/Downside	Recommendation	Adj MCap / P/E										Adj MCap / Adj P/E										P24-P27Z1 CAGR %					P25-P27Z2 CAGR %					RoC (%)					RoE (%)																																																																																																																																																																																																																																																																																																																																																																																																																																																																																																																																																																																																																																																																																																																																																																																																																																																																																																																																																																																																																																																																																																																																																																																																																																																																																																									
										P/E1	P/E2	P/E3	P/E4	P/E5	P/E6	P/E7	P/E8	P/E9	P/E10	P/E11	P/E12	P/E13	P/E14	P/E15	P/E16	P/E17	P/E18	P/E19	P/E20	P/E21	P/E22	P/E23	P/E24	P/E25	P/E26	P/E27	P/E28	P/E29	P/E30	P/E31	P/E32	P/E33	P/E34	P/E35	P/E36	P/E37	P/E38	P/E39	P/E40	P/E41	P/E42	P/E43	P/E44	P/E45	P/E46	P/E47	P/E48	P/E49	P/E50	P/E51	P/E52	P/E53	P/E54	P/E55	P/E56	P/E57	P/E58	P/E59	P/E60	P/E61	P/E62	P/E63	P/E64	P/E65	P/E66	P/E67	P/E68	P/E69	P/E70	P/E71	P/E72	P/E73	P/E74	P/E75	P/E76	P/E77	P/E78	P/E79	P/E80	P/E81	P/E82	P/E83	P/E84	P/E85	P/E86	P/E87	P/E88	P/E89	P/E90	P/E91	P/E92	P/E93	P/E94	P/E95	P/E96	P/E97	P/E98	P/E99	P/E100	P/E101	P/E102	P/E103	P/E104	P/E105	P/E106	P/E107	P/E108	P/E109	P/E110	P/E111	P/E112	P/E113	P/E114	P/E115	P/E116	P/E117	P/E118	P/E119	P/E120	P/E121	P/E122	P/E123	P/E124	P/E125	P/E126	P/E127	P/E128	P/E129	P/E130	P/E131	P/E132	P/E133	P/E134	P/E135	P/E136	P/E137	P/E138	P/E139	P/E140	P/E141	P/E142	P/E143	P/E144	P/E145	P/E146	P/E147	P/E148	P/E149	P/E150	P/E151	P/E152	P/E153	P/E154	P/E155	P/E156	P/E157	P/E158	P/E159	P/E160	P/E161	P/E162	P/E163	P/E164	P/E165	P/E166	P/E167	P/E168	P/E169	P/E170	P/E171	P/E172	P/E173	P/E174	P/E175	P/E176	P/E177	P/E178	P/E179	P/E180	P/E181	P/E182	P/E183	P/E184	P/E185	P/E186	P/E187	P/E188	P/E189	P/E190	P/E191	P/E192	P/E193	P/E194	P/E195	P/E196	P/E197	P/E198	P/E199	P/E200	P/E201	P/E202	P/E203	P/E204	P/E205	P/E206	P/E207	P/E208	P/E209	P/E210	P/E211	P/E212	P/E213	P/E214	P/E215	P/E216	P/E217	P/E218	P/E219	P/E220	P/E221	P/E222	P/E223	P/E224	P/E225	P/E226	P/E227	P/E228	P/E229	P/E230	P/E231	P/E232	P/E233	P/E234	P/E235	P/E236	P/E237	P/E238	P/E239	P/E240	P/E241	P/E242	P/E243	P/E244	P/E245	P/E246	P/E247	P/E248	P/E249	P/E250	P/E251	P/E252	P/E253	P/E254	P/E255	P/E256	P/E257	P/E258	P/E259	P/E260	P/E261	P/E262	P/E263	P/E264	P/E265	P/E266	P/E267	P/E268	P/E269	P/E270	P/E271	P/E272	P/E273	P/E274	P/E275	P/E276	P/E277	P/E278	P/E279	P/E280	P/E281	P/E282	P/E283	P/E284	P/E285	P/E286	P/E287	P/E288	P/E289	P/E290	P/E291	P/E292	P/E293	P/E294	P/E295	P/E296	P/E297	P/E298	P/E299	P/E300	P/E301	P/E302	P/E303	P/E304	P/E305	P/E306	P/E307	P/E308	P/E309	P/E310	P/E311	P/E312	P/E313	P/E314	P/E315	P/E316	P/E317	P/E318	P/E319	P/E320	P/E321	P/E322	P/E323	P/E324	P/E325	P/E326	P/E327	P/E328	P/E329	P/E330	P/E331	P/E332	P/E333	P/E334	P/E335	P/E336	P/E337	P/E338	P/E339	P/E340	P/E341	P/E342	P/E343	P/E344	P/E345	P/E346	P/E347	P/E348	P/E349	P/E350	P/E351	P/E352	P/E353	P/E354	P/E355	P/E356	P/E357	P/E358	P/E359	P/E360	P/E361	P/E362	P/E363	P/E364	P/E365	P/E366	P/E367	P/E368	P/E369	P/E370	P/E371	P/E372	P/E373	P/E374	P/E375	P/E376	P/E377	P/E378	P/E379	P/E380	P/E381	P/E382	P/E383	P/E384	P/E385	P/E386	P/E387	P/E388	P/E389	P/E390	P/E391	P/E392	P/E393	P/E394	P/E395	P/E396	P/E397	P/E398	P/E399	P/E400	P/E401	P/E402	P/E403	P/E404	P/E405	P/E406	P/E407	P/E408	P/E409	P/E410	P/E411	P/E412	P/E413	P/E414	P/E415	P/E416	P/E417	P/E418	P/E419	P/E420	P/E421	P/E422	P/E423	P/E424	P/E425	P/E426	P/E427	P/E428	P/E429	P/E430	P/E431	P/E432	P/E433	P/E434	P/E435	P/E436	P/E437	P/E438	P/E439	P/E440	P/E441	P/E442	P/E443	P/E444	P/E445	P/E446	P/E447	P/E448	P/E449	P/E450	P/E451	P/E452	P/E453	P/E454	P/E455	P/E456	P/E457	P/E458	P/E459	P/E460	P/E461	P/E462	P/E463	P/E464	P/E465	P/E466	P/E467	P/E468	P/E469	P/E470	P/E471	P/E472	P/E473	P/E474	P/E475	P/E476	P/E477	P/E478	P/E479	P/E480	P/E481	P/E482	P/E483	P/E484	P/E485	P/E486	P/E487	P/E488	P/E489	P/E490	P/E491	P/E492	P/E493	P/E494	P/E495	P/E496	P/E497	P/E498	P/E499	P/E500	P/E501	P/E502	P/E503	P/E504	P/E505	P/E506	P/E507	P/E508	P/E509	P/E510	P/E511	P/E512	P/E513	P/E514	P/E515	P/E516	P/E517	P/E518	P/E519	P/E520	P/E521	P/E522	P/E523	P/E524	P/E525	P/E526	P/E527	P/E528	P/E529	P/E530	P/E531	P/E532	P/E533	P/E534	P/E535	P/E536	P/E537	P/E538	P/E539	P/E540	P/E541	P/E542	P/E543	P/E544	P/E545	P/E546	P/E547	P/E548	P/E549	P/E550	P/E551	P/E552	P/E553	P/E554	P/E555	P/E556	P/E557	P/E558	P/E559	P/E560	P/E561	P/E562	P/E563	P/E564	P/E565	P/E566	P/E567	P/E568	P/E569	P/E570	P/E571	P/E572	P/E573	P/E574	P/E575	P/E576	P/E577	P/E578	P/E579	P/E580	P/E581	P/E582	P/E583	P/E584	P/E585	P/E586	P/E587	P/E588	P/E589	P/E590	P/E591	P/E592	P/E593	P/E594	P/E595	P/E596	P/E597	P/E598	P/E599	P/E600	P/E601	P/E602	P/E603	P/E604	P/E605	P/E606	P/E607	P/E608	P/E609	P/E610	P/E611	P/E612	P/E613	P/E614	P/E615	P/E616	P/E617	P/E618	P/E619	P/E620	P/E621	P/E622	P/E623	P/E624	P/E625	P/E626	P/E627	P/E628	P/E629	P/E630	P/E631	P/E632	P/E633	P/E634	P/E635	P/E636	P/E637	P/E638	P/E639	P/E640	P/E641	P/E642	P/E643	P/E644	P/E645	P/E646	P/E647	P/E648	P/E649	P/E650	P/E651	P/E652	P/E653	P/E654	P/E655	P/E656	P/E657	P/E658	P/E659	P/E660	P/E661	P/E662	P/E663	P/E664	P/E665	P/E666	P/E667	P/E668	P/E669	P/E670	P/E671	P/E672	P/E673	P/E674	P/E675	P/E676	P/E677	P/E678	P/E679	P/E680	P/E681	P/E682	P/E683	P/E684	P/E685	P/E686	P/E687	P/E688	P/E689	P/E690	P/E691	P/E692	P/E693	P/E694	P/E695	P/E696	P/E697	P/E698	P/E699	P/E700	P/E701	P/E702	P/E703	P/E704	P/E705	P/E706	P/E707	P/E708	P/E709	P/E710	P/E711	P/E712	P/E713	P/E714	P/E715	P/E716	P/E717	P/E718	P/E719	P/E720	P/E721	P/E722	P/E723	P/E724	P/E725	P/E726	P/E727	P/E728	P/E729	P/E730	P/E731	P/E732	P/E733	P/E734	P/E735	P/E736	P/E737	P/E738	P/E739	P/E740	P/E741	P/E742	P/E743	P/E744	P/E745	P/E746	P/E747	P/E748	P/E749	P/E750	P/E751	P/E752	P/E753	P/E754	P/E755	P/E756	P/E757	P/E758	P/E759	P/E760	P/E761	P/E762	P/E763	P/E764	P/E765	P/E766	P/E767	P/E768	P/E769	P/E770	P/E771	P/E772	P/E773	P/E774	P/E775	P/E776	P/E777	P/E778	P/E779	P/E780	P/E781	P/E782	P/E783	P/E784	P/E785	P/E786	P/E787	P/E788	P/E789	P/E790	P/E791	P/E792	P/E793	P/E794	P/E795	P/E796	P/E797	P/E798	P/E799	P/E800	P/E801	P/E802	P/E803	P/E804	P/E805	P/E806	P/E807	P/E808	P/E809	P/E810	P/E811	P/E812	P/E813	P/E814	P/E815	P/E816	P/E817	P/E818	P/E819	P/E820	P/E821	P/E822	P/E823	P/E824	P/E825	P/E826	P/E827	P/E828	P/E829	P/E830	P/E831	P/E832	P/E833	P/E834	P/E835	P/E836	P/E837	P/E838	P/E839	P/E840	P/E841	P/E842	P/E843	P/E844	P/E845	P/E846	P/E847	P/E848	P/E849	P/E850	P/E851	P/E852	P/E853	P/E854	P/E855	P/E856	P/E857	P/E858	P/E859	P/E860	P/E861	P/E862	P/E863	P/E864	P/E865	P/E866	P/E867	P/E868	P/E869	P/E870	P/E871	P/E872	P/E873	P/E874	P/E875	P/E876	P/E877	P/E878	P/E879	P/E880	P/E881	P/E882	P/E883	P/E884	P/E885	P/E886	P/E887	P/E888	P/E889	P/E890	P/E891	P/E892	P/E893	P/E894	P/E895	P/E896	P/E897	P/E898	P/E899	P/E900	P/E901	P/E902	P/E903	P/E904	P/E905	P/E906	P/E907	P/E908	P/E909	P/E910	P/E911	P/E912	P/E913	P/E914	P/E915	P/E916	P/E917	P/E918	P/E919	P/E920	P/E921	P/E922	P/E923	P/E924	P/E925	P/E926	P/E927	P/E928	P/E929	P/E930	P/E931	P/E932	P/E933	P/E934	P/E935	P/E936	P/E937	P/E938	P/E939	P/E940	P/E941	P/E942	P/E943	P/E944	P/E945	P/E946	P/E947	P/E948	P/E949	P/E950	P/E951	P/E952	P/E953	P/E954	P/E955	P/E956	P/E957	P/E958	P/E959	P/E960	P/E961	P/E962	P/E963	P/E964	P/E965	P/E966	P/E967	P/E968	P/E969	P/E970	P/E971	P/E972	P/E973	P/E974	P/E975	P/E976	P/E977	P/E978	P/E979	P/E980	P/E981	P/E982	P/E983	P/E984	P/E985	P/E986	P/E987	P/E988	P/E989	P/E990	P/E991	P/E992	P/E993	P/E994	P/E995	P/E996	P/E997	P/E998	P/E999	P/E1000	P/E1001	P/E1002	P/E1003	P/E1004	P/E1005	P/E1006	P/E1007	P/E1008	P/E1009	P/E1010	P/E1011	P/E1012	P/E1013	P/E1014	P/E1015	P/E1016	P/E1017	P/E1018	P/E1019	P/E1020	P/E1021	P/E1022	P/E1023	P/E1024	P/E1025	P/E1026	P/E1027	P/E1028	P/E1029	P/E1030	P/E1031	P/E1032	P/E1033	P/E1034	P/E1035	P/E1036	P/E1037	P/E1038	P/E1039	P/E1040	P/E1041	P/E1042	P/E1043	P/E1044	P/E1045	P/E1046	P/E1047	P/E1048	P/E1049	P/E1050	P/E1051	P/E1052	P/E1053	P/E1054	P/E1055	P/E1056	P/E1057	P/E1058	P/E1059	P/E1060	P/E1061	P/E1062	P/E1063	P/E1064	P/E1065	P/E1066	P/E1067	P/E1068	P/E1069	P/E1070	P/E1071	P/E1072	P/E1073	P/E1074	P/E1075	P/E1076	P/E1077	P/E1078	P/E1079	P/E1080	P/E1081	P/E1082	P/E1083	P/E1084	P/E1085	P/E1086	P/E1087	P/E1088	P/E1089	P/E1090	P/E1091	P/E1092	P/E1093	P/E1094	P/E1095	P/E1096	P/E1097	P/E1098	P/E1099	P/E1100	P/E1101	P/E1102	P/E1103	P/E1104	P/E1105	P/E1106	P/E1107	P/E1108	P/E1109	P/E1110	P/E1111	P/E1112	P/E1113	P/E1114	P/E1115	P/E1116	P/E1117	P/E1118	P/E1119	P/E1120	P/E1121	P/E1122	P/E1123	P/E1124	P/E1125	P/E1126	P/E1127	P/E1128	P/E1129	P/E1130	P/E1131	P/E1132	P/E1133	P/E1134	P/E1135	P/E1136	P/E1137	P/E1138	P/E1139	P/E1140	P/E1141	P/E1142	P/E1143	P/E1144	P/E1145	P/E1146	P/E1147	P/E1148	P/E1149	P/E1150	P/E1151	P/E1152	P/E1153	P/E1154	P/E1155	P/E1156	P/E1157	P/E1158	P/E1159	P/E1160	P/E1161	P/E1162	P/E1163	P/E1164	P/E1165	P/E1166	P/E1167	P/E1168	P/E1169	P/E1170	P/E1171	P/E1172	P/E1173	P/E1174	P/E1175	P/E1176	P/E1177	P/E1178	P/E1179	P/E1180	P/E1181	P/E1182	P/E1183	P/E1184	P/E1185	P/E1186	P/E1187	P/E1188	P/E1189	P/E1190	P/E1191	P/E1192	P/E1193	P/E1194	P/E1195	P/E1196	P/E1197	P/E1198	P/E1199	P/E1200	P/E1201	P/E1202	P/E1203	P/E1204	P/E1205	P/E1206	P/E1207	P/E1208	P/E1209	P/E1210	P/E1211	P/E1212	P/E1213	P/E1214	P/E1215	P/E1216	P/E1217	P/E1218	P/E1219	P/E1220	P/E1221	P/E1222	P/E1223	P/E1224	P/E1225	P/E1226	P/E1227	P/E1228	P/E1229	P/E1230	P/E1231	P/E1232	P/E1233	P/E1234	P/E1235	P/E1236	P/E1237	P/E1238	P/E1239	P/E1240	P/E1241	P/E1242	P/E1243	P/E1244	P/E1245	P/E1246	P/E1247	P/E1248	P/E1249	P/E1250	P/E1251	P/E1252	P/E1253	P/E1254	P/E1255	P/E1256	P/E1257	P/E1258	P/E1259	P/E1260	P/E1261	P/E1262	P/E1263	P/E1264	P/E1265	P/E1266	P/E1267	P/E1268	P/E1269	P/E1270	P/E1271	P/E1272	P/E1273	P/E1274	P/E1275	P/E1276	P/E1277	P/E1278	P/E1279	P/E1280	P/E1281	P/E1282	P/E1283	P/E1284	P/E1285	P/E1286	P/E1287	P/E1288	P/E1289	P/E1290	P/E1291	P/E1292	P/E1293

## Disclaimer:

Any document, including this report, which is prepared by the research team of SMIFS is circulated for the purpose of information only to the intended recipient and should not be replicated or quoted or circulated to any person/corporate or legal entities in any form. This document/ documents/ reports/ opinion should not be interpreted as an investment/ taxation/ legal advice. While the information contained in the report has been procured in good health, from sources considered/ believed to be reliable, all/ part of the statement/ statements/ opinion/ opinions/ view/views in the report may not be considered to be complete or accurate. Therefore, it should only be relied upon at the recipients own risk.

**Research Analysts/ Economists/ Advisors/ Investment Strategies or any other spokespersons of the company (SMIFS) are often sought after for expressing their views on print/ electronic/ web media. The views expressed are purely based on their assumption/ understanding on fundamental approach/ technical and historic facts on the subject. The views expressed should not be constructed as an offer to buy/ sell or hold equity/ commodity/ currencies or their derivatives. The views/ opinions expressed is for information purpose only, and may change due to underlying factor, related or unrelated or other market conditions and may or may not be updated.**

SMIFS, its subsidiaries, or any of its directors, employees, agents, and representatives shall not be liable for any damages whether direct or indirect, incidental, special or consequential including lost revenue or lost profits that may arise from or in connection with the use of the information/ research reports/ opinions expressed.

**Disclosure:** Clients/ associates of SMIFS Group may be holding positions in equities or their derivatives on which the research report is made or opinion is formed or views are expressed in print or electronic media. We ensure all compliance is adhered to with this report/ reports/ opinion or views expressed.

Analyst ownership of the stock- NIL

Analyst's dependent relatives' ownership in the stock- NIL

**Analyst Certification:** *The matter related to the report has been taken from sources believed reliable and the views expressed about the subject or issues in this report accurately reflect the personal views of the analyst/analysts. SMIFS does not compensate partly or in full, directly or indirectly, related to specific recommendations or views expressed by the research analysts'/market strategies/ Portfolio Managers.*

REGISTRATION as required under SEBI (Research Analyst) Regulation 2014 has been granted by Securities & Exchange Board of India (SEBI), registration number being INH300001474.

## SMIFS Limited.

### Compliance Officer:

**Tamari Chatterjee,**

5F Vaibhav, 4 Lee Road, Kolkata 700020, West Bengal, India.

Contact No.: +91 33 4011 5414 / +91 33 6634 5414

Email Id.: [compliance@smifs.com](mailto:compliance@smifs.com)

### Mumbai Office:

206/207, Trade Centre, Bandra Kurla Complex (BKC), Bandra East, Mumbai – 400051, India

Contact No.: (D) +91 22 4200 5508, (B) +91 22 4200 5555

Email Id: [institutional.equities@smifs.com](mailto:institutional.equities@smifs.com)

### Kolkata Office:

Vaibhav, 4 Lee Road, Kolkata 700020, West Bengal, India.

Contact No.: (D) +91 33 6634 5466, (B) +91 33 4011 5466

Email Id: [smifs.institutional@smifs.com](mailto:smifs.institutional@smifs.com)